

PT3

Protocol Translator

TECHNICAL DATA



The PT3 Protocol Translator is a software/hardware package commonly called the “Rosetta Stone” that simplifies the setup and programming of remote control systems used with Lectrosonics LecNet™ audio components. LecNet components include automatic microphone mixers, programmable matrix mixers, a digital hybrid telephone interface, a 4in/4out DSP signal processor and two programmable equalizers.

The PT3 is armed with an intrinsic knowledge of AMX®, LecNet™ and MIDI protocols. As such, the PT3 is simultaneously an AMX-compatible peripheral, a LecNet controller and a MIDI receiver.

As an AMX-compatible peripheral with its own AXlink™ device number, familiar AXCESS™ commands used in the AMX control system dispatch LecNet functions, and monitor and report LecNet status changes on the AMX device screens.

As a MIDI device, program changes, notes and controllers easily trigger LecNet actions. A common use for the MIDI interface is in automated show operation to route audio signals via LecNet matrix mixing components.

As an intelligent LecNet controller, the PT3 is ready to use with a built-in library of LecNet devices and hundreds of LecNet commands, stored in a user-expandable and downloadable library. Most applications require only point-and-click setup. For those few cases requiring detailed LecNet interaction, strings and buffers handle the LecNet addressing and timings automatically.

The PT3 is housed in a compact, machined aluminum enclosure that can easily be placed in an equipment rack without using a full rack space. Standard connectors are used for all I/O ports to simplify installation.

Feature Highlights

- Programmable interface between LecNet™ audio components and AMX® remote control systems
- Operates as a MIDI receiver for automatic operation of LecNet devices
- Point-and-click software supplied includes virtually all LecNet functions
- No RS-232 programming or LecNet timings to worry about

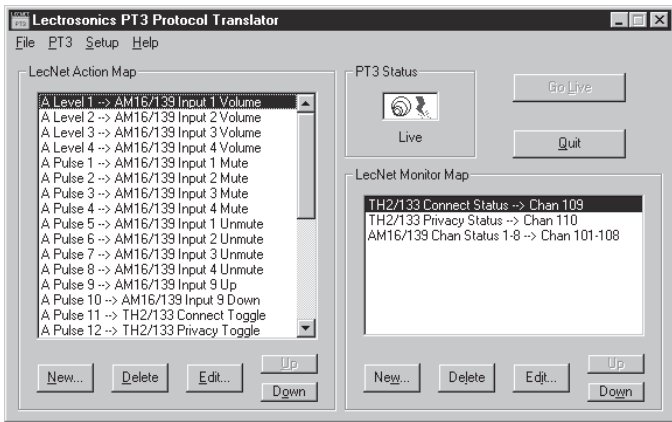
The PT3 applies the Lectrosonics philosophy that reliable performance, simplicity of setup and ease of installation are mandatory in any intelligent product design. This philosophy is elegantly demonstrated in the PT3.

The PT3 puts an end to RS-232 programming hassles, so you can stop worrying about LecNet protocols and timings, and start using your imagination to create truly effective, remote controlled automatic sound systems.

The Rosetta Stone



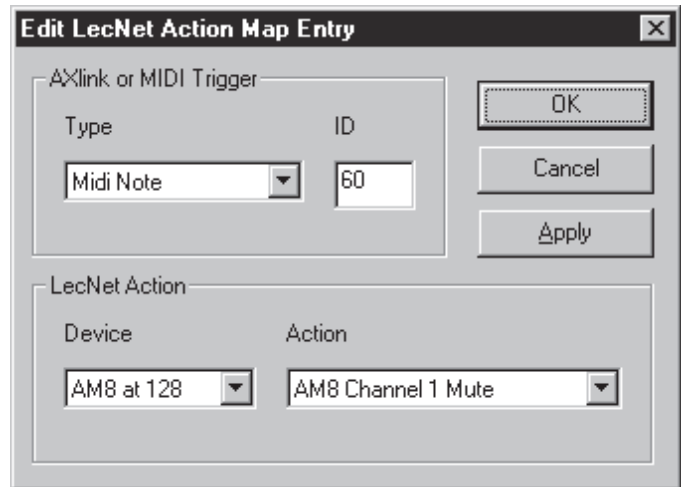
Software interface



The main window provides an overview of your setup.

AXlink channels and levels, as well as MIDI notes, controllers and program changes, can be selected to trigger LecNet functions from a simple point-and-click interface. LecNet status may also be automatically monitored by an AMX control system in real time. Choose from hundreds of stock LecNet functions or create your own with the PT3's convenient graphical editor.

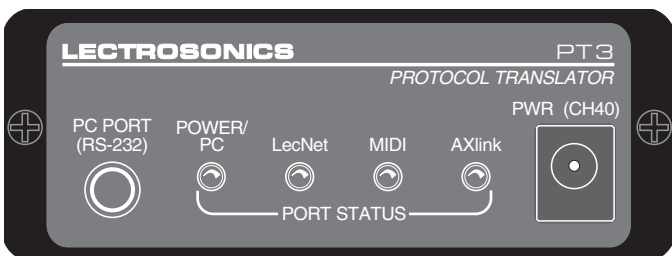
Because the PT3 is an intelligent translator, the association of AXlink or MIDI triggers with LecNet functions is flexible and powerful. A single external trigger may launch an entire sequence of LecNet functions if desired. Numerical parameters are automatically scaled for maximum ease of use. In many cases, LecNet functionality may be changed and extended without modifying the MIDI or AMX control system programming.



This window is used to view or edit each translation. Simply select the trigger type and ID, then associate it with any action on any LecNet device. What's a stop bit? With the PT3 you don't need to know.

If your LecNet devices are connected during setup, they can be detected automatically and entered in the list of available devices. If you prefer, you may work off-line as well, saving your setup to disk and programming the PT3 at another time. Once the PT3 is programmed and installed in a system, it works as the LecNet system controller without the computer connected.

A library of commands is regularly updated and ready for downloading from the Lectrosonics web site at <http://www.lectrosonics.com> for the latest updates to the command library.



FRONT PANEL

The **PC PORT** is used to set up the PT3 from a personal computer using the supplied LecNet software. The connector is a standard 3.5 mm TRS jack. A serial port adapter cable is included with the PT3.

The **POWER/PC** LED normally glows steadily, indicating that the PT3 is powered on. While the unit is being programmed via the PC Port, this LED flickers to indicate activity and verify serial communications.

The **LecNet** LED indicates LecNet activity and the operating mode of the PT3 by glowing steadily, blinking on momentarily or blinking off momentarily.

The **MIDI** LED indicates MIDI activity as the PT3 is operating.

The **AXlink** LED flashes slowly in sync with the LEDs on other connected AXlink-compatible devices.

The PT3 may be powered by a Lectrosonics CH40 charger or via the AXlink port on the rear panel.



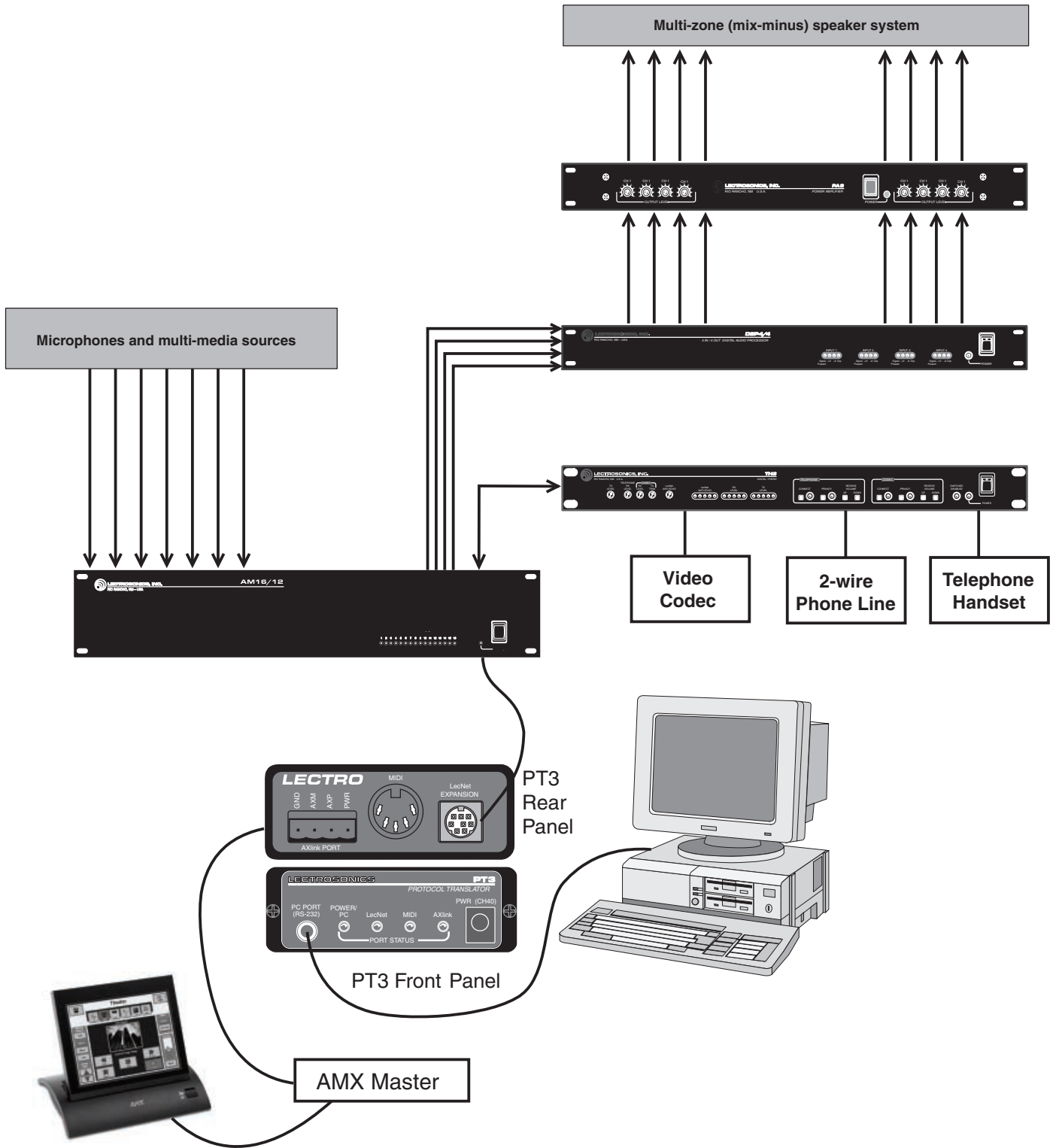
REAR PANEL

The four pin **AXlink PORT** is fully compatible with those used on other AMX-compatible equipment.

The **MIDI** jack is a standard 5-pin DIN MIDI input configuration for pin-to-pin wiring with any MIDI device.

The **LecNet EXPANSION** jack is for connection to the serial bus of one or more LecNet devices. If a PC and LecNet devices are both connected during setup, the LecNet software can automatically detect the types and identities of all connected LecNet devices. It is not necessary, however, to connect LecNet devices to complete the setup of the PT3.

Typical System Integration



Applications

SMALL CONFERENCE ROOM

Using a PT3, an AM8 auto mixer and a digital telephone hybrid, a small business conference room with teleconferencing capability is easily configured with AMX remote control.

LARGE CONFERENCE ROOM

The PT3, an AM16/12 automatic matrix mixer and a digital telephone hybrid, all under AMX remote control, is a straightforward design for a large conference room. The system can easily include mix-minus sound reinforcement and touch screen control of all volume settings and teleconferencing functions.

ROOM COMBINING

The programmable matrix mixing ability of the AM16/12 mixer can be integrated with the convenience of AMX remote control for conference facilities that include up to four rooms. Pre-programmed room combinations are instantly selected with touch screen control that includes audio signal routing and independent NOM attenuation for each room.

COURTROOMS

Modern courtroom sound system design requires single point control of volume levels, sound masking, multi-channel recording, mix-minus sound reinforcement and teleconferencing functions. All of this can easily be accomplished with a PT3, AM16/12 matrix mixer, TH3A digital hybrid and an AMX remote control system.

MIDI CONTROLLED WIRELESS MIC SYSTEMS

Show automation can be designed to change audio signal routing simultaneously with scene changes using the PT3 and Lectrosonics matrix mixers.

Using a PT3 and a Lectrosonics UDR200 (B or C versions) wireless receivers, performers can share wireless receivers which are retuned to pre-programmed frequencies automatically at scene changes, under MIDI control.



PC Port:	RS-232C, 9600 baud, 8 data bits; no parity, 1 stop bit
MIDI Port:	MIDI 1.0 compliant MIDI input
AXlink Port:	AXlink 2.0 compatible interface
Power Requirements:	100 mA at 20VAC, 50 mA at 12VDC; 2 Watts max.
Weight:	0.5 lbs.
Dimensions:	3.25" wide, 1.25" high, 4.50" deep

*AMX® is a registered trademark of AMX Corp.
AXlink™ and AXCESS™ are trademarks of AMX Corp.
LecNet™ is a trademark of Lectrosonics, Inc.*

PT3TD-0102



LECTROSONICS®

581 Laser Road NE - Rio Rancho, NM - 87124 USA
tel (505) 892-4501 or (800) 821-1121 - fax (505) 892-6243

Web: www.lectrosonics.com - **E-mail:** sales@lectrosonics.com